



State-of-the-Art Technology

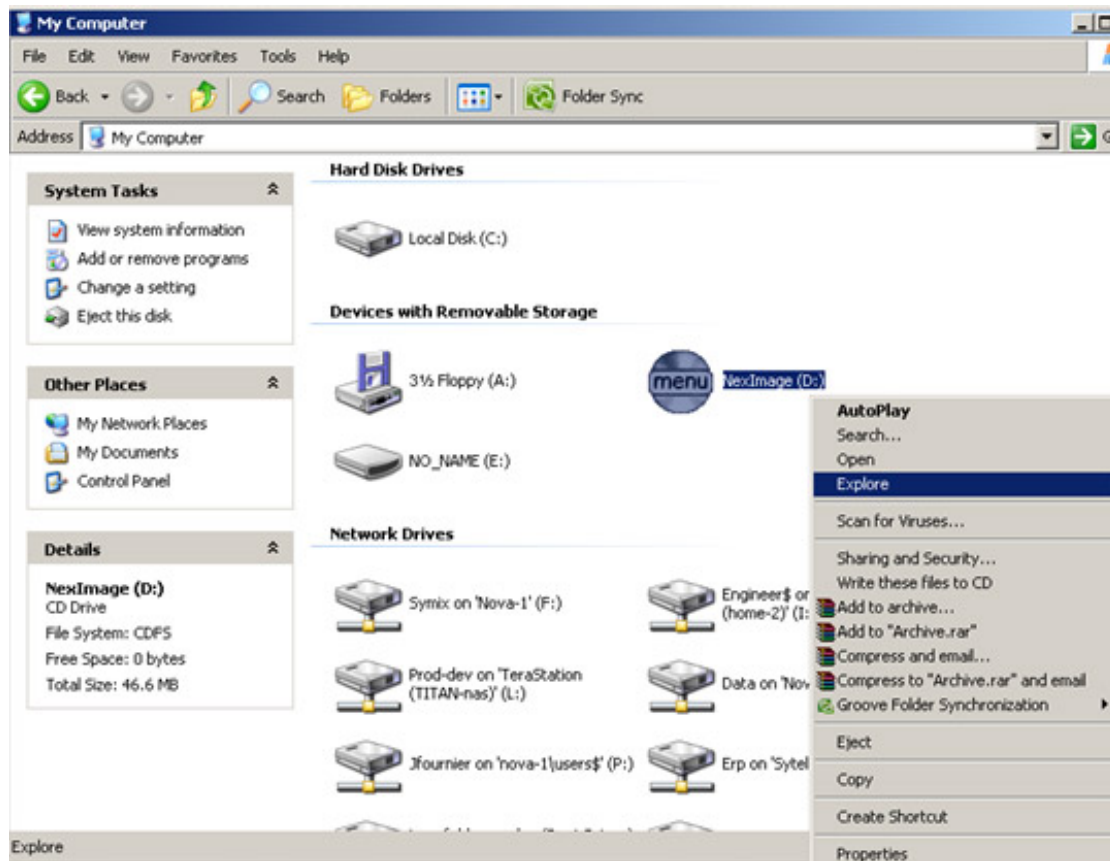


Easy to Use Features

YOU ARE HERE : HOME / Support Home > Knowledgebase > NexImage FAQs > How can I get my NexImage to work with my Windows Vista 32 bit operating system?

How can I get my NexImage to work with my Windows Vista 32 bit operating system?

1. Install the NexImage CD into your computer's CD Rom drive.
2. From "My Computer", right click on the icon for your computer CD drive, and click on "Explore".



3. Copy the contents of the CD over to a folder on your computers C: drive.
4. Copy the [CamVia20](#) driver to the same folder on your C: drive
5. Plug the NexImage camera into your computer's USB port.
6. Your computer should detect the NexImage as a new device. (If your computer does not detect the NexImage, follow the steps below).
7. Follow the direct from the "Found New Hardware Wizard"
8. Select the option that "Install from a list or specific location"

Related Topics

[I use Windows XP and the driver does not appear to work with the camera. \(All models\)](#)

[What operating systems will my SkyScout update software and drivers work on?](#)

[Will SkyScout work with Microsoft Vista operating system?](#)

[I install NexRemote but get an error message saying "'Class does not support Automation or does not support expected interface'](#)

Additional Information

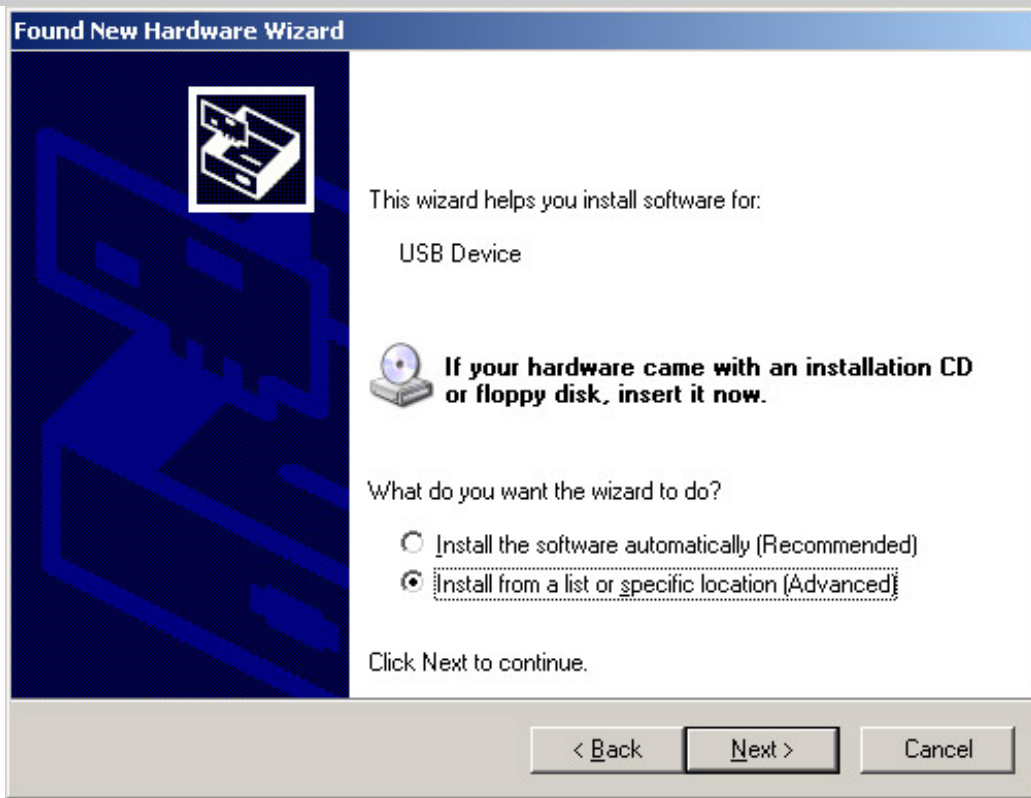
Article ID: 326
 Author: Celestron Webmaster
 Created On: 21 Dec 2007
 Edited On: 03 Jan 2008
 Edited By: Derik
 Views: 650

 [Print Article](#)

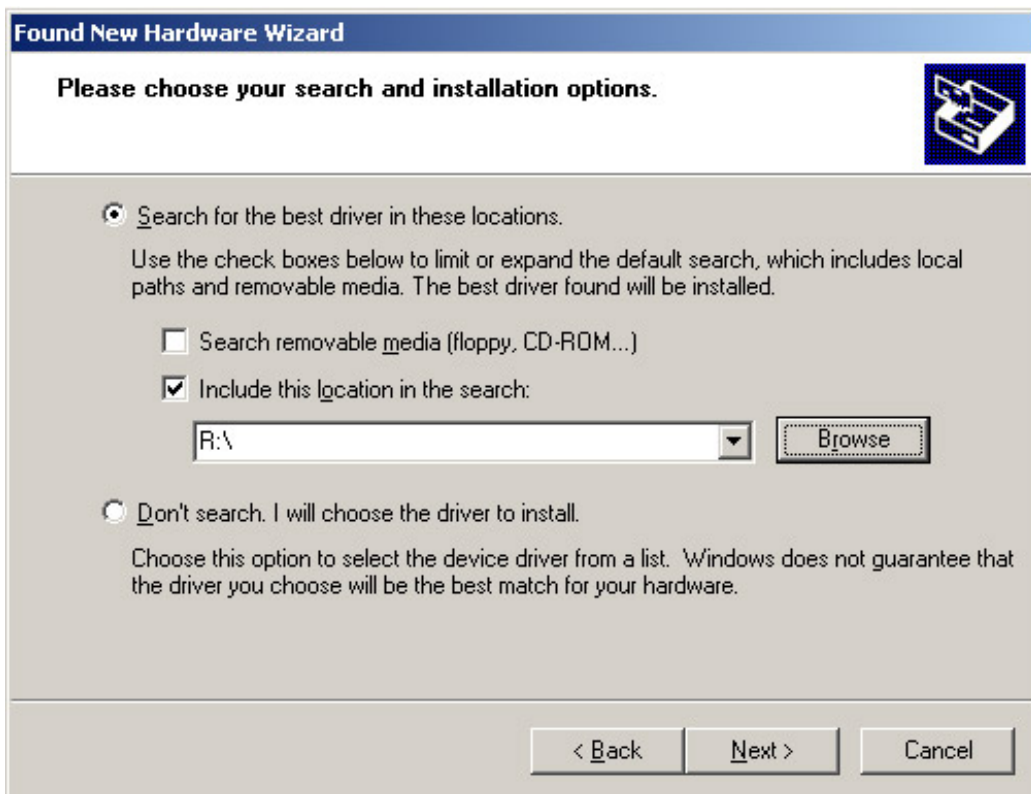
 [Add to Favorites](#)

 [Rate this Article](#)

 [Add a Comment](#)



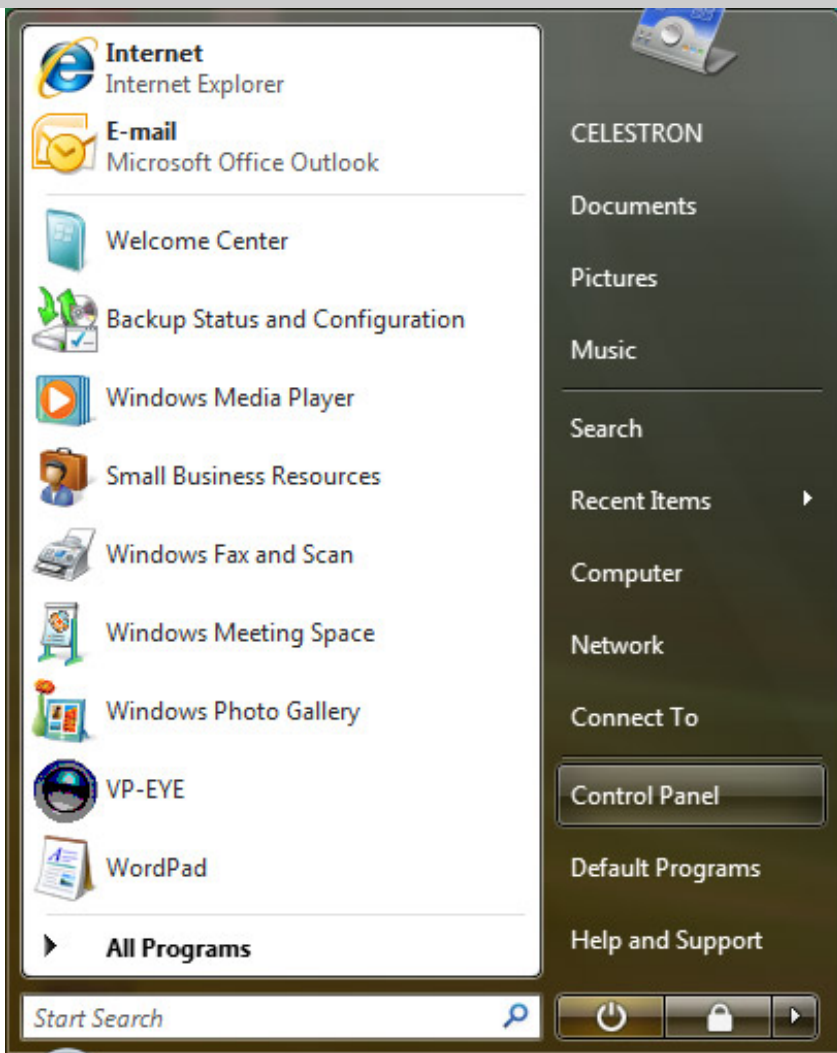
9. Click on the "Browse" button and choose the folder containing the driver.



10. Once the driver is installed, the NexImage camera should operate on your Vista machine.

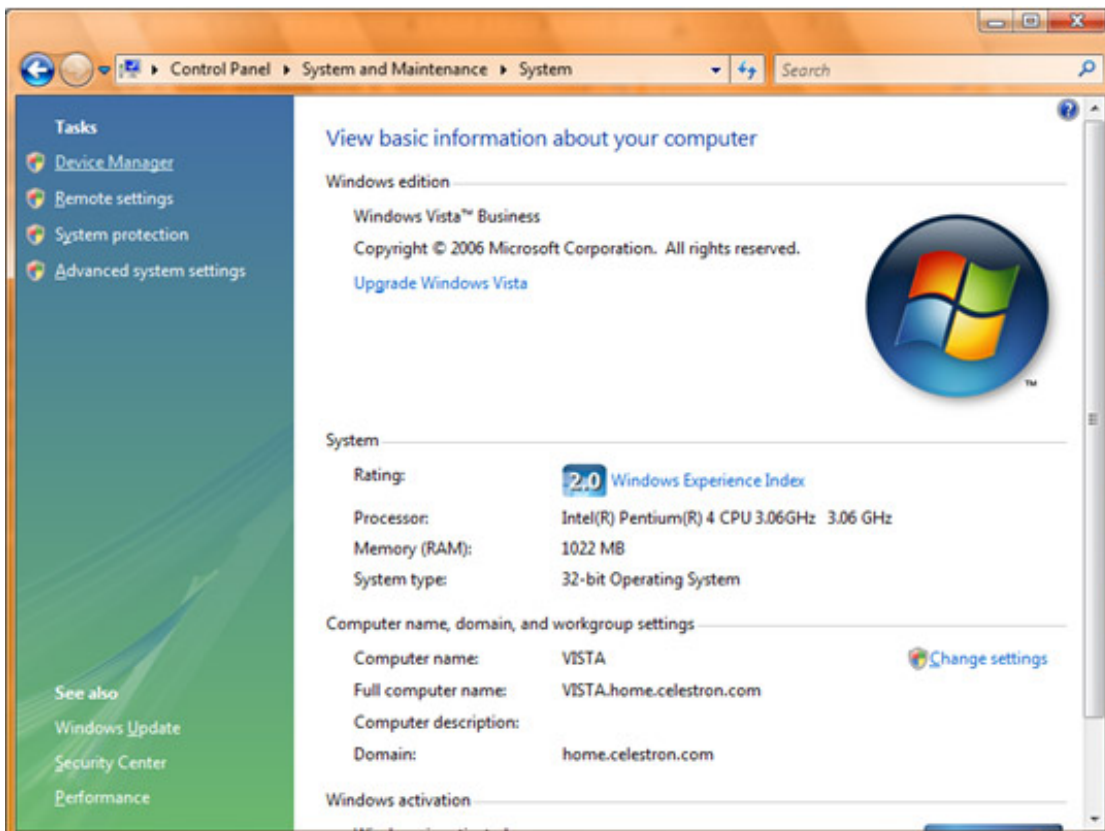
If your computer does not recognize the NexImage camera when plugged into the USB port, then:

1. Follow steps 1-5 above.
2. Press Start, and select Control Panel

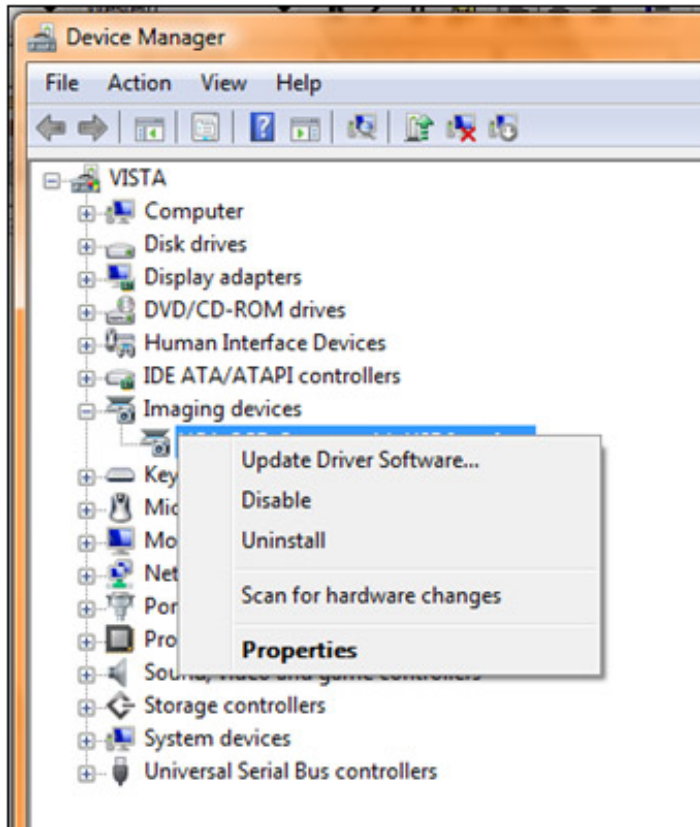


3. Click on "System and Maintenance" and then click on the "System" option.

4. Choose "Device Manager" from the option on the menu bar at the left.



- From the "Device Manager", right-click on "Unknown Imaging Device" and select the "Update Driver Software" option.



- From here, choose the folder containing the new driver.

- Once the driver is installed, the NexImage camera should operate on your Vista machine.

Rating: ★★★★★ (54 Votes)

Was this answer helpful?: Yes No

User Comments (Add Comment)

You can post your views here, HTML is not allowed. If your comment does not immediately appear after posting then moderation is enabled and a staff member will review it and approve it as soon as possible.

Fullname:

Email: *

Comments:

* Optional

No comments added for this article, [click here](#) to add a comment.